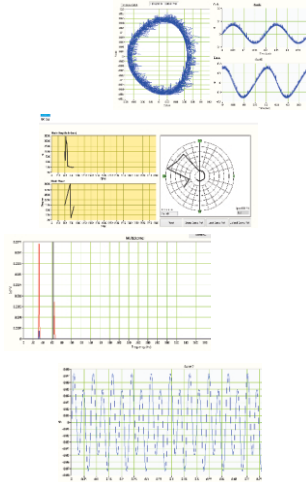


TS-600

Vibration Signal Simulator

Feature

- Output: 3 channels (2 signal & 1 pulse)
- Independent phase setting for each channel
- Single sine/Multi sine signals available
- Pulse generator for RPM simulation
- Amplitude scaling for Displacement
- Graphical LCD with industrial push buttons
- Compatible with IEPE/Displacement monitors
- BNC output connectors
- Rechargeable battery
- Handheld device
- Polar, Bode, Orbit plot test
- Frequency spectrum test



Application

- TS-600 is an easy to setup handheld device for testing vibration and other dynamic measurement systems, it can generate sine & pulse signals in different formats (Single sine, Multi sine) which is very helpful in determination of health status of a monitoring system. User can create different amplitudes and frequencies to imitate different measurement ranges to test the dynamic range of a measurement device.
- It has two output channels for signal and one output for KeyPhasor® enabling the user to test frequency spectrum, orbit plot, phase readings and polar plot of a measurement system.
- TS-600 output can be connected to systems in IEPE and voltage mode measurement, so enabling the user to test displacement and rotational speed monitors. Signal amplitude can be set from 0 Vp-p to 12.5 Vp-p leading to a wide range of signal amplitudes and the frequency may be set from 1 Hz to 2.5 KHz while changing the phase difference of two signal outputs from 0 to 360 degrees.
- DC Voltage can be from 0 Vdc to -12.5 Vdc

Technical data		TS-600	
Output	2 Sine & 1Pulse	Output compatibility	IEPE & Voltage mode
Frequency Range	1 Hz to 2.5 KHz	Phase	0-360 degree
AC Amplitude	0 to 12.5 Vp-p	Duty	1 to 90%
DC Amplitude	0 to -12.5 Vdc		
Physical		Physical	
Case material	Plastic	Connection	BNC
Weight	210 g nom.	Power	Rechargeable battery
Dimensions	40 * 150 *100 (mm)		